



## Wireless Troubleshooting

The only way to rule out non-Wi-Fi devices as the source of interference is by using spectrum analysis software. A spectrum analyzer helps you find the areas where devices may be having collisions by measuring the amplitude of any device sharing frequencies with your Wi-Fi coverage. Chanalyzer helps you to solve Wi-Fi congestion issues in the 2.4 GHz and 5 GHz bands.

### Chanalyzer Pro is a mobile interference solution that features:

- Color-Coded Spectrum Analysis
- Real-Time Discovery and Analysis of all RF
- Professional Report Generation
- Robust Capture and Playback
- CleanAir® Remote Analysis (available in Chanalyzer Pro with Cisco CleanAir)

## Error-Proof Your Wireless Approach

With Chanalyzer Pro you are able to visualize how non-Wi-Fi transmitters and environmental Wi-Fi saturation affect your wireless networks. By integrating information from your Wi-Fi card with raw RF spectrum data pulled from an attached Wi-Spy, Chanalyzer Pro helps you defeat Wi-Fi Dead Zones once and for all.

## DVR-Like Playback Controls for Multi-Taskers Everywhere

Similar to your television's DVR, you can pause or rewind your data while Chanalyzer continues to record in the background. The recorded data is saved to a temporary file to reduce the strain on your computer's temporary memory. Every graph and table in Chanalyzer adjusts itself to display only information from the selected time span in the Waterfall Navigation Pane.

## Deliver Your Report Before You Leave

Chanalyzer's Report Builder provides you with a simple way to explain RF interference and congestion issues to your end users. With just one click, you can add a snapshot, edit image size, create descriptions or use our preloaded explanations. When you've completed your report, export it directly to PDF, or save to html, rtf, or clipboard.

### Report Builder will help you:

- Create a more accurate account of spectrum events
- Build comparisons to highlight the impact from interference
- Divide captures into sessions by location for accurate reporting

## Report Interferers that Affect your Air Quality

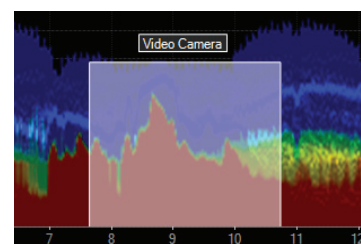
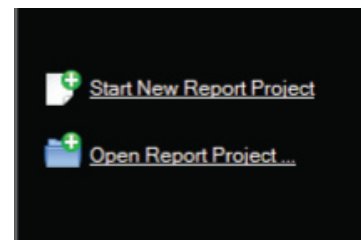
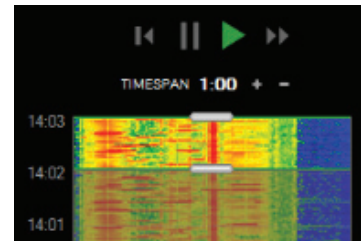
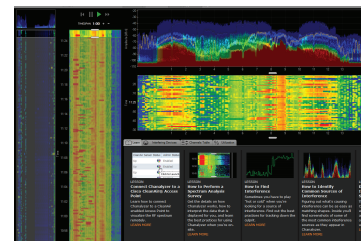
**CleanAir-Only** - Simplify your wireless interference documentation by using Chanalyzer Pro with Cisco CleanAir. The interferers list stays consistent with Chanalyzer Pro's Waterfall Navigation and includes adjustable duty cycle thresholds to only display interferers that may significantly impact the wireless network.

## Troubleshoot Wireless Interference from your Desk

**CleanAir-Only** - Chanalyzer Pro with Cisco CleanAir allows you to remotely visualize both 2.4 and 5 GHz wireless environments simultaneously from WSSI Modules or access points in Local, Monitor, or SE-Connect modes. Simply load a CCF file from Cisco Prime, or connect using an IP address and a NSI key.

SOFTWARE

**SPECTRUM  
ANALYSIS  
for 802.11**



## Get the Right Software for Your Toolkit and Save Money

	Chanalyzer Pro Mobile	Chanalyzer Pro with Cisco CleanAir Mobile	Chanalyzer Pro with Cisco CleanAir
MetaCare Assurance	✓	✓	✓
Density Display	✓	✓	✓
Generate A Report	✓	✓	✓
Record and Save Your Session	✓	✓	✓
Automatically Classify Devices	✓	✓	✓
Navigate Recording with Waterfall View	✓	✓	✓
Simultaneous Dual-Band Navigation		✓	✓
CleanAir Connect		✓	✓
Filterable Interferers List		✓	✓
Portable USB Spectrum Analyzer	✓	✓	
Locate Interference with Device Finder	✓	✓	
Wi-Fi Network Overlays	✓	✓	
Record Wi-Fi Network Data	✓	✓	

### Introducing MetaCare Assurance Plan

The MetaCare Assurance Plan is a software maintenance agreement that entitles you to obtain and legally install future software updates for MetaGeek software.

Updates range from bug fixes, minor feature updates, major enhancements, and all the other wonderful changes we have in store.

More information about MetaCare Assurance Plan, visit [www.metageek.net/metacare](http://www.metageek.net/metacare)

### Software Requirements

OPERATING SYSTEM: **Microsoft® Windows 8, 7, Vista \***

\* support for Windows XP (SP3) to be announced

MAC OS X VIRTUALIZATION: **VMware Fusion, Parallels**

NOTE: Virtual machines require an external USB Wi-Fi adapter to view Wi-Fi information

DISPLAY RESOLUTION: **1024 x 600** (or better)

FRAMEWORK: **.Net Framework 4** (or better)

USB PORT: **1.1** (or better)

RAM: **4 GB**

#### Cisco CleanAir Mode

HARDWARE: **Cisco CleanAir Enabled Access Point**  
(for remote troubleshooting)

#### MetaGeek Wi-Spy Mode

HARDWARE: **Wi-Spy 2.4x, Wi-Spy DBx, or Wi-Spy 900x**  
**Built-In Wi-Fi card**  
(802.11n recommended, a/b/g compatible)