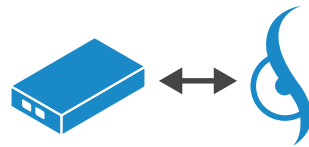


# PROFI SIGHT

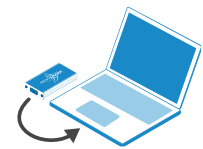
NETWORK TRAFFIC ANALYZER FOR NETWORK TROUBLESHOOTING  
AND PERFORMANCE MONITORING



REAL-TIME ANALYTICS



FULL PROFISHARK INTEGRATION



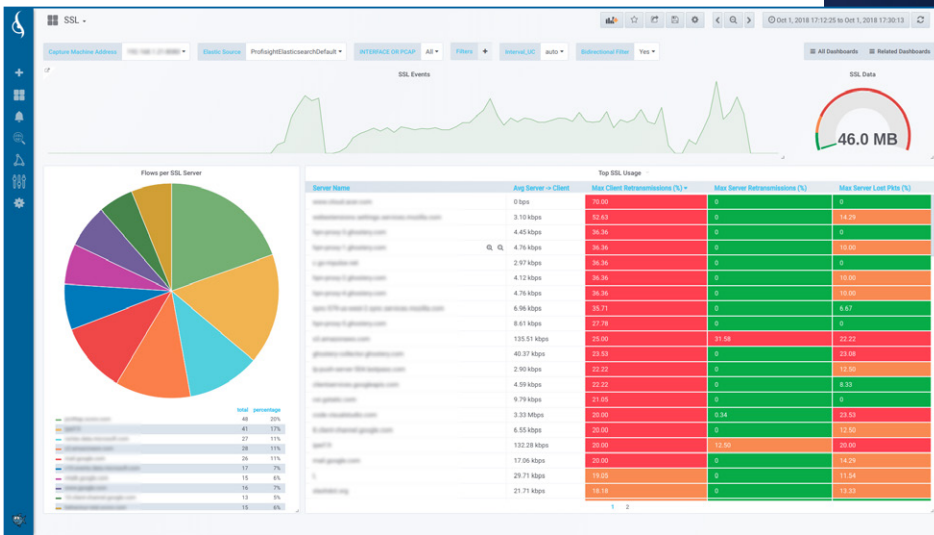
EASY DEPLOYMENT

## ABOUT PROFISIGHT

ProfiSight is a web-based network traffic monitoring application, giving a complete insight of the network and infrastructure, providing remote capturing, overview of all 7 OSI layers, flow-based analysis, APM, trend reports, and much more. It is designed and optimized for fast indexing, and for filtering large amounts of network traffic instantly, greatly optimizing your workflow and reducing time spent on troubleshooting. ProfiSight provides visibility and diagnostics across your distributed and dynamic applications, such as DNS, NETBIOS, NTP, FTP, SSH, SNMP, most of the common user applications, and many others.

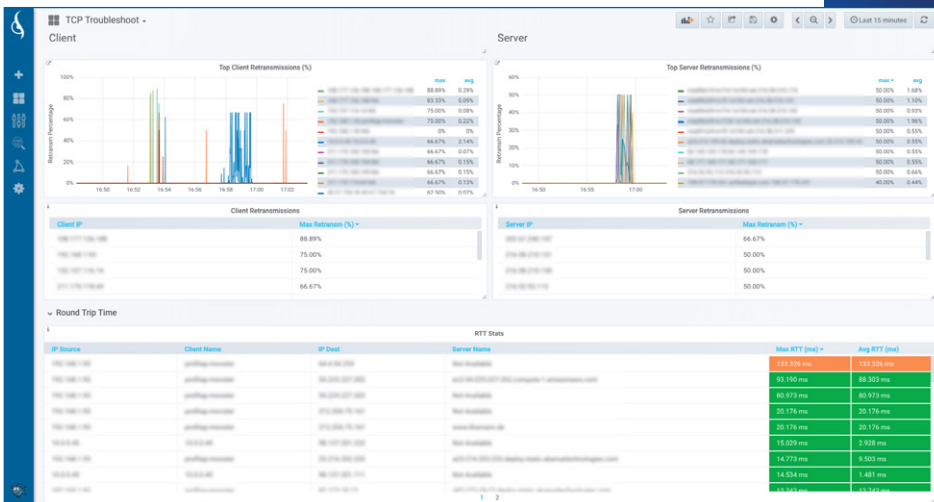
## FEATURES

- SIMPLE, FAST AND ACCURATE ISSUE IDENTIFICATION**  
 Get immediate insight into network traffic and adjust your resources for optimal performance and quickly spot network issues.
- REMOTE OFF-SITE DIAGNOSIS AND CAPTURE (PROFISHARK)**  
 Connect to multiple ProfiShark capture points at once and combine the captured files into a single view for analysis.
- REAL-TIME ANALYTICS**  
 ProfiSight is designed for fast indexing of traffic capture and will help you improve your monitoring workflow and save valuable troubleshooting time.
- CUSTOMIZE YOUR VIEW OF THE NETWORK (DASHBOARDS AND PANELS)**  
 Besides a list of predefined dashboards, ProfiSight allows users to define and create dashboards to their own requirements.
- USE THE POWER OF TRAFFIC CAPTURE WITH PROFISHARK**  
 Good analysis starts with a reliable capture of the network traffic. ProfiShark gives you exactly that with line-rate and fail-safe performance.



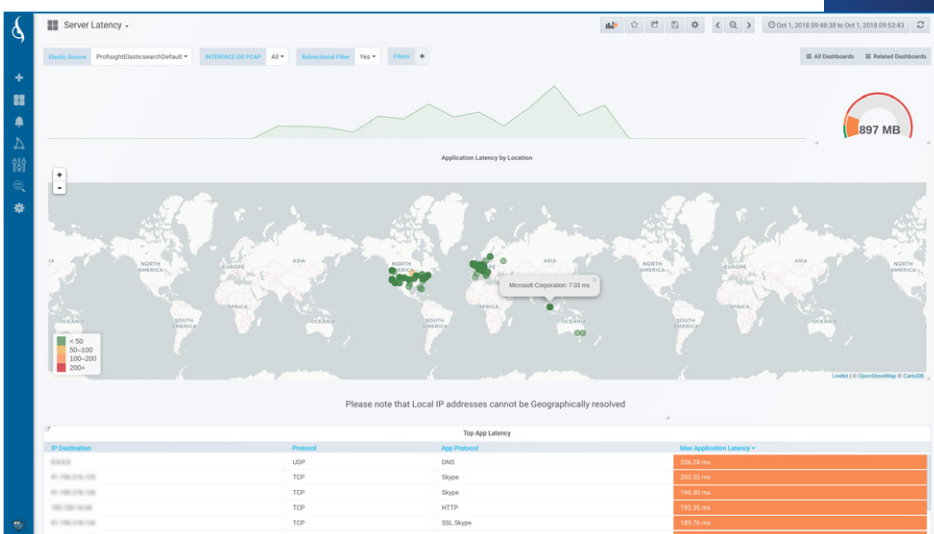
## Application Performance Monitoring

Get an overview, or filter on specific applications, through HTTP, SSL, and DNS dashboards. You can also create custom dashboards.



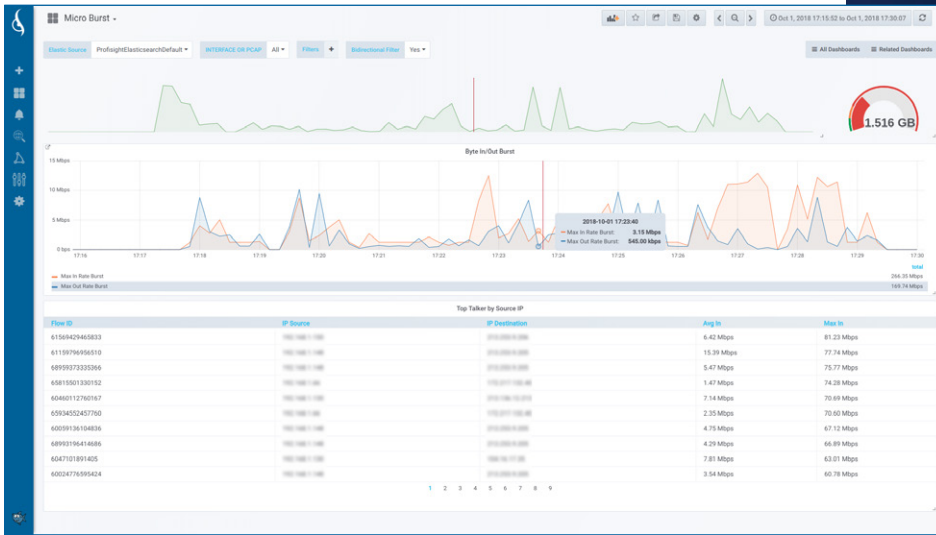
## TCP Troubleshooting

Pinpoint the root cause of your problem with TCP dashboards, such as retransmissions, lost packets, server congestion, ports usage, and more.



## Latency Detection

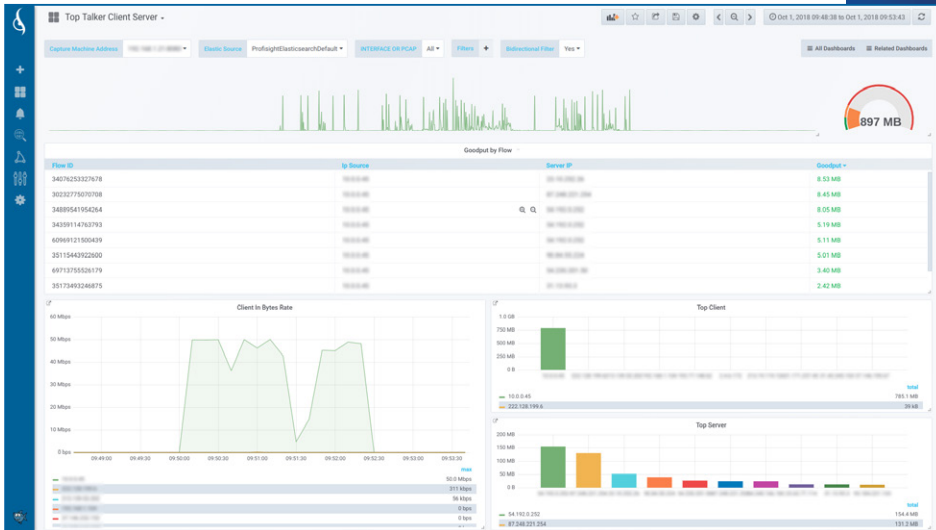
Application latency per server, including GeoIP resolution in map.



## Bandwidth Usage

Bandwidth usage per host, flow, port, and others.

Microburst detection. Goodput metrics. Packet and traffic statistics.



## Top Talkers

Top clients / servers in your network, sorted by packets, bandwidth consumption, or protocol.

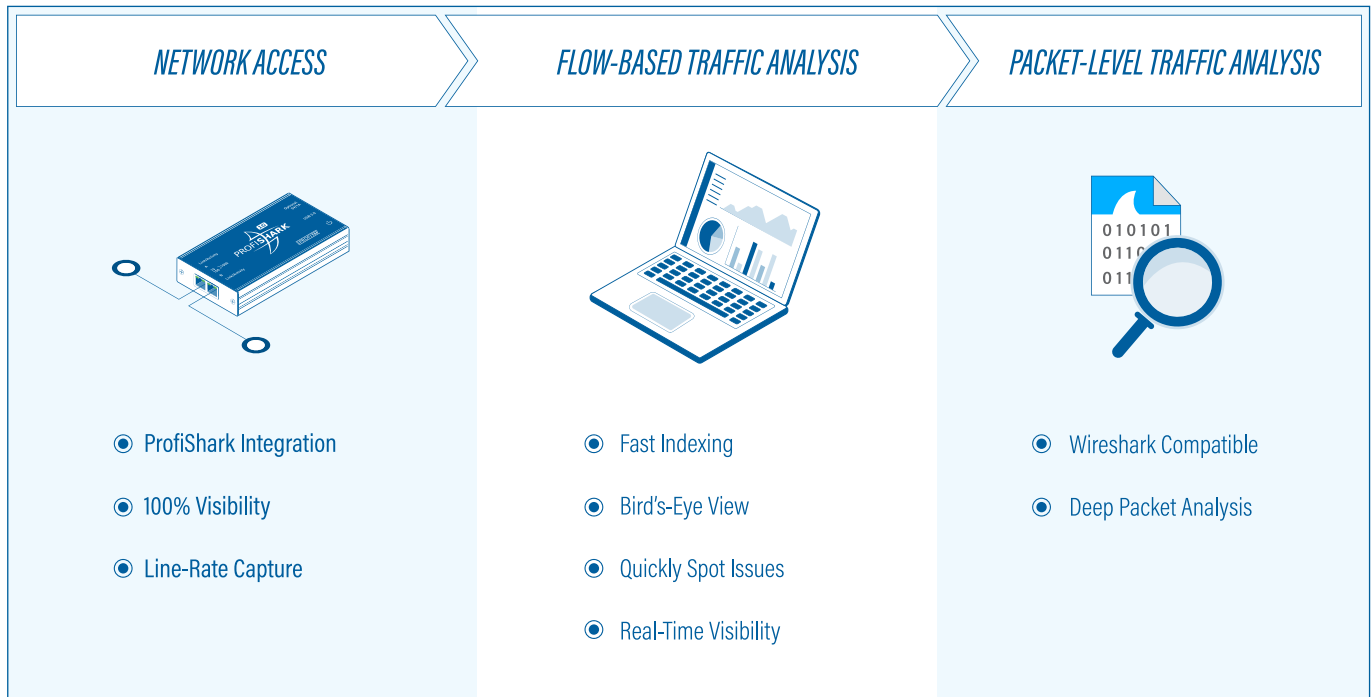
## INTEGRATION WITH PROFITAP PRODUCTS

ProfiSight integrates seamlessly with the ProfiShark range of portable capture devices, allowing a reliable line-rate capture from a physical TAP directly into ProfiSight, providing 100% accurate visibility into the network. ProfiSight can also be used with other TAP systems, and provides a GUI to import Wireshark captures from any other source.



# CAPABILITIES

- Bandwidth utilization, microbursts
- Statistics per host, IP, and per L4 and L7 Protocols
- Flow metrics per interface
- TCP indicators (lost packets, retransmissions, zero windows, etc.)
- Application latency metrics, per server and location
- Application-specific dashboards



# SYSTEM REQUIREMENTS

<b>Hardware</b>	Minimum: Intel Core Duo 2.4 GHz, 8 GB RAM Recommended: Intel Quad 3.0 GHz, 8+ GB RAM
<b>Network</b>	Fast Ethernet
<b>Disk Space</b>	350 MB Installation 5 GB minimum free disk space recommended for first captures Long-term captures limited by disk space
<b>Devices</b>	Up to 6 ProfiShark devices can be used to capture simultaneously
<b>OS</b>	Windows 10, 64-bit Linux (LTS) Ubuntu Family, 64-bit