

# Cascade 10.6

## WHAT'S NEW

### New Features and Capabilities

- Cascade Express Virtual Edition
  - Virtualized, all-in-one network performance management
- Cascade Profiler integration with RPM Dashboards
  - Contextual drill down for domain-specific detail
- WAN Op and VoIP dashboard templates
- TACACS+ authentication support on Cascade Profiler
- Two-port 10G NIC card for Cascade Express
- Precision Time Protocol (PTP) support on Cascade Shark
  - Synchronize Cascade Shark with other devices on the network
- Support for external syslog solutions

Effectively managing network performance in today's complex, hybrid network environments requires an integrated view that gives all IT stakeholders complete visibility into network, user, and application performance. Riverbed® Cascade® version 10.6 from Riverbed Performance Management (RPM) provides visibility into private cloud or software-defined data center environments running virtual networks. By delivering application visibility anywhere you need it—from the data center and the branch to the private cloud and the mobile enterprise—Cascade lifts the veil even further on application traffic to deliver the performance, visibility, and control you need regardless of where your users or applications reside.

### SDDC and cloud monitoring

Cascade Express 460 Virtual Edition is a virtualized, all-in-one network performance monitoring solution that deploys easily so IT teams can quickly identify network and application performance issues and troubleshoot them before end users even notice. Due to its virtual form factor, it can be deployed:

- By companies that have fully embraced virtualization
- Within software-defined data centers using virtualized networks
- By small or mid-sized enterprises as an alternative to the Cascade Express hardware appliance

Cascade Express combines the follow capabilities into a single, virtualized appliance:

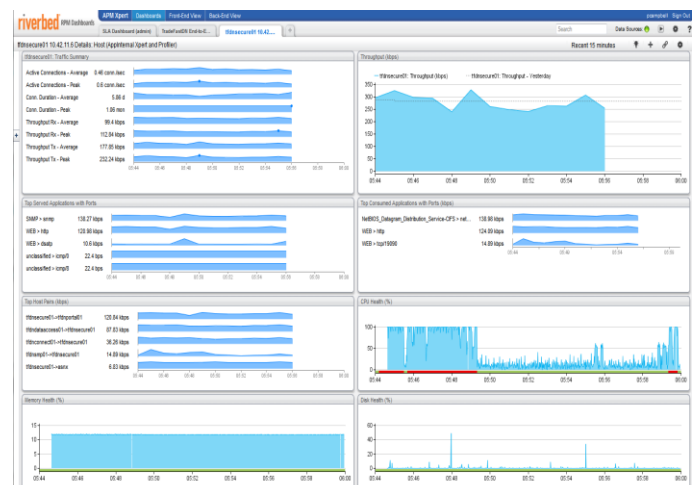
- Cascade Profiler for analytics, dependency mapping, and reporting

- Cascade Gateway for flow collection
- Cascade Shark for high-speed packet capture
- Cascade Pilot for graphical packet analysis

### Cascade Profiler integration with RPM Dashboards

A variety of IT groups outside of network operations need access to network performance data. Without a central view to collaborate and share data across these teams, the network inevitably gets blamed for poor application performance. With this release, Cascade Profiler has been integrated with RPM Dashboards to provide a unified view of application performance—from end-user experience and infrastructure performance, to network issues, and what's happening at the application code level.

When Cascade Profiler is connected as a data source, you gain Top Talker and Top Interface views with the ability to drill down for additional, supporting details. In this way, network managers and other IT teams have the holistic view needed to quickly find and fix performance issues before they impact end users.



**Figure 1. Cascade Profiler is fully integrated with RPM Dashboards.**

## New WAN Op and VoIP dashboard templates

Cascade dashboard templates deploy in two clicks to simplify set up so that different teams can be on the same page and immediately have a common view of baseline visibility. The new Overall WAN template displays traffic volumes of optimized and non-optimized WAN and LAN traffic and top network interfaces. It helps you understand whether WAN optimization settings in Steelhead are meeting expectations.

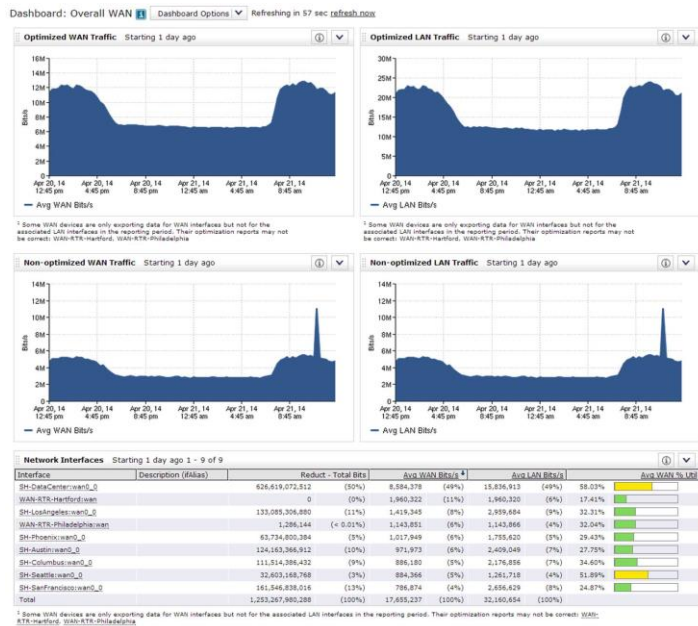


Figure 2. The Overall WAN dashboard helps you understand how well your optimized and non-optimized WAN and LAN traffic is performing.

### Additional enhancements

- Remote authentication and authorization by TACACS+ and RADIUS servers for Cascade Profiler
- Two-port 10G NIC card for Cascade Express
- Precision Time Protocol (PTP) support to synchronize time on Cascade Shark with other devices on the network
- Support for external syslog solutions, enabling you to define and send event data from Cascade Shark appliances to one or more syslog devices

There are also two new VoIP dashboard templates: VoIP Call Quality Usage and VoIP Quality of Service. The VoIP Call Quality Usage dashboard provides at-a-glance views into the performance of branch-to-branch traffic to more quickly troubleshoot critical VoIP applications with insight into:

- Average Jitter
- Average MOS (mean opinion score)
- % real-time packet loss
- Traffic volume

The VoIP Quality of Service dashboard helps you troubleshoot problems with QoS by displaying “DSCP usage for EF” or expedited forwarding class for your latency-sensitive VoIP services.

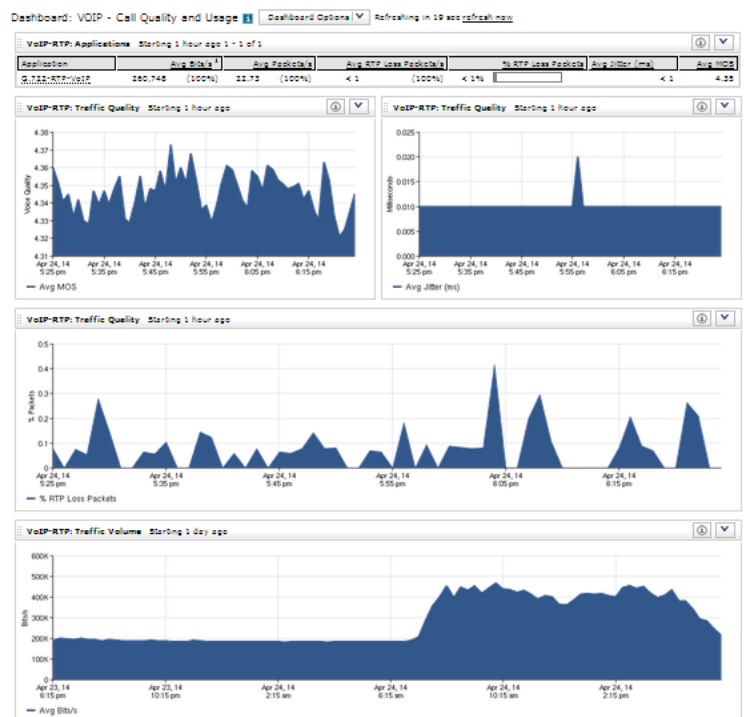


Figure 3. The VoIP Call Quality Usage dashboard provides at-a-glance insight into branch-to-branch traffic to more quickly identify VoIP performance issues.

## About Riverbed

Riverbed delivers application performance for the globally connected enterprise. With Riverbed, enterprises can successfully and intelligently implement strategic initiatives such as virtualization, consolidation, cloud computing, and disaster recovery without fear of compromising performance. By giving enterprises the platform they need to understand, optimize and consolidate their IT, Riverbed helps enterprises to build a fast, fluid and dynamic IT architecture that aligns with the business needs of the organization. Additional information about Riverbed (NASDAQ: RVBD) is available at [www.riverbed.com](http://www.riverbed.com).