

i VisiWave Site Survey Quick Start Guide

Welcome to VisiWave Site Survey. Here you will learn the basic steps required for performing a site survey using VisiWave Site Survey. It covers both collecting data and creating reports.

Instead of reading this page, you may prefer to watch a short video that covers almost the same thing. The VisiWave Site Survey Overview Video (demo.php) tutorial is a short video demonstration of creating a new survey and producing a simple report.

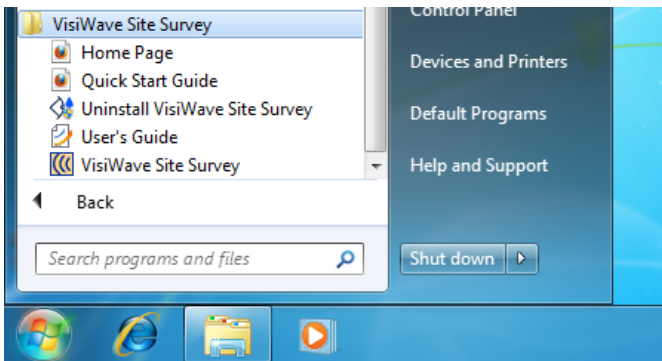
At this point, you should already have the product installed. If you don't, please go to <http://www.visiwave.com> (/) and click on the *Download* link. Then follow the instructions for downloading and installing the product.

i Starting the Application

From the Windows Start menu, click on All Programs and then VisiWave Site Survey. Here you will see menu items for launching the VisiWave application, a link to the User's Guide in PDF format, a link to VisiWave's website, a link to uninstall VisiWave, and a link to this guide.

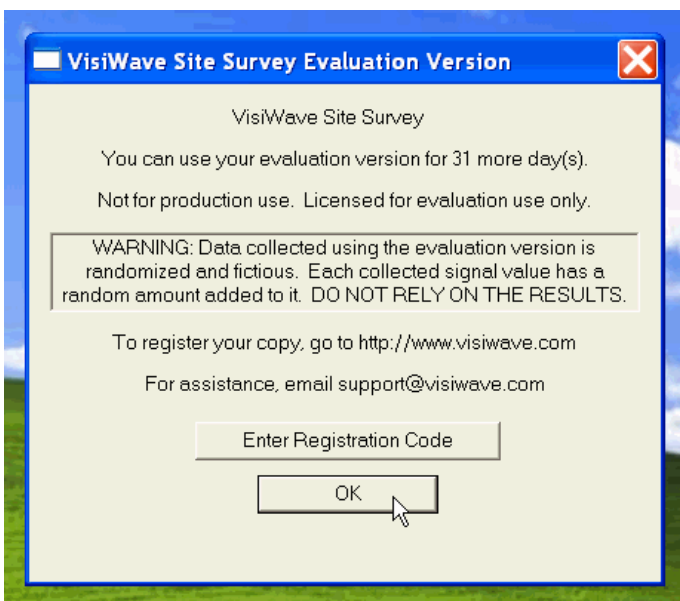
For instructions that go beyond this quick start guide, click on the *User's Guide* menu item to view the full product manual.

Click on the *VisiWave Site Survey* menu item to launch the application.



i The Evaluation Version Reminder

During the evaluation period, you will occasionally be reminded that you are using a version designed just for evaluating the product. Click on *OK* to get past this dialog. If you purchased the product, you won't see this message.

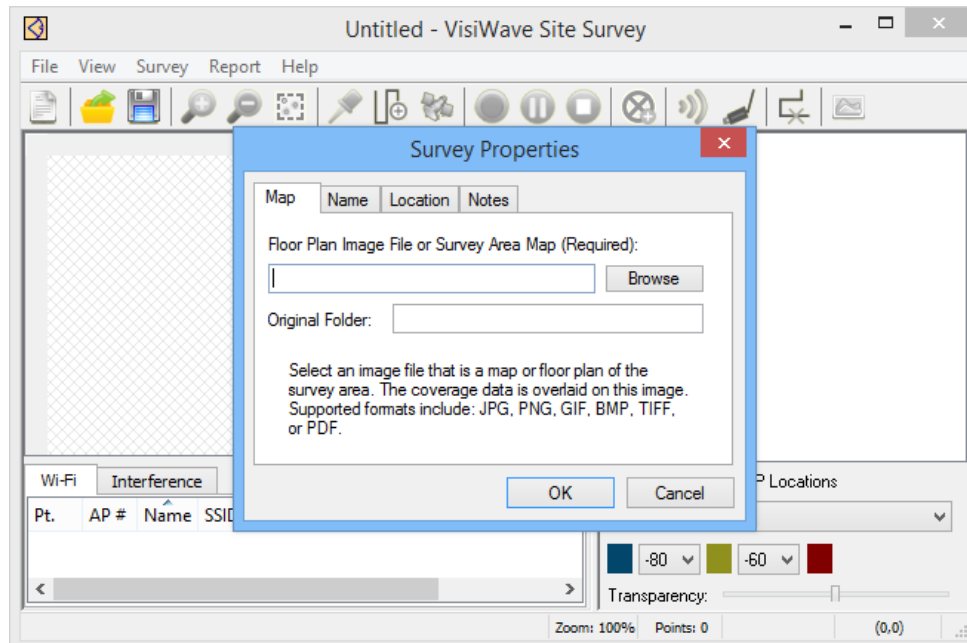


i Creating a New Survey File

Click on File|New to create a new survey file. You are then asked for the survey map of the site you are going to survey. Under *Floor Plan Image File*, select your own GIF, JPEG, PNG, BMP, or PDF survey map image file or just use the sample one shipped with the product (typically found in the *Samples* folder under *My Site Surveys* found in the standard *Documents* folder). Then click *OK*.

Next you will see a window asking you to set the scale of the survey map. The *Scale* value represents the width of a pixel in the survey map image in either feet or meters. A fairly accurate value for the scale must be supplied. Otherwise, the graphs will not be displayed correctly. For this example, if you don't know the scale, you can leave it as the suggested value. You can correct the value at any time using the Set Scale menu item.

Click *OK* to display the survey map and begin performing a site survey.



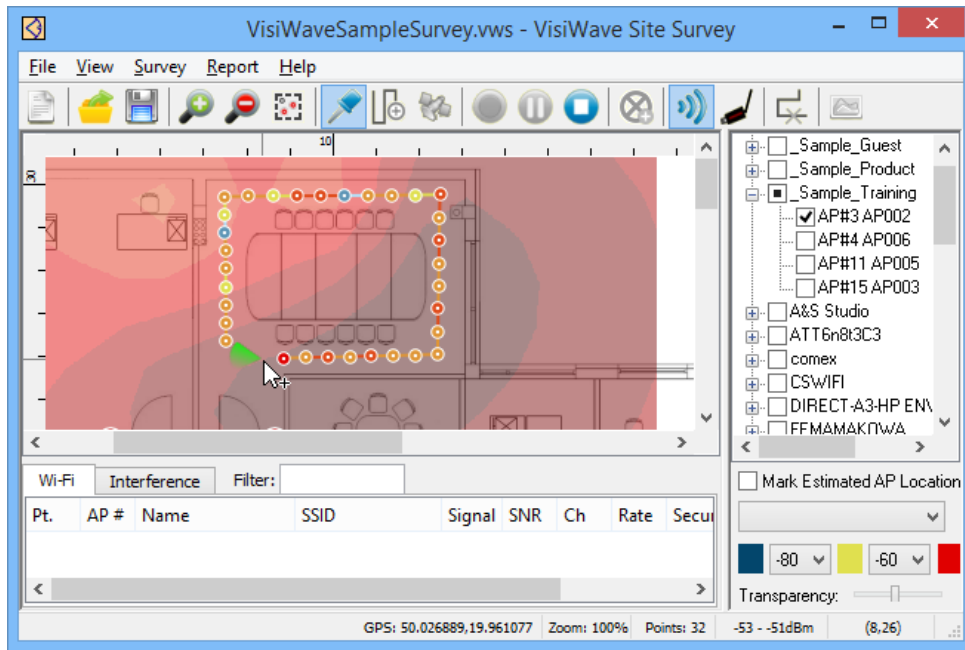
i Collecting Survey Data

You should now see the survey map displayed in the window. It's time to start collecting data. The first step is to select a capture mode. Do this by clicking on the *push-pin* icon that selects the *Point-by-Point* capture mode. This means that every time you click on the survey map image, wireless data is captured and associated with the location where you clicked.

For this example, you don't have to physically move your laptop between clicks if you don't want to, but in a real survey you would walk around while clicking on the screen.

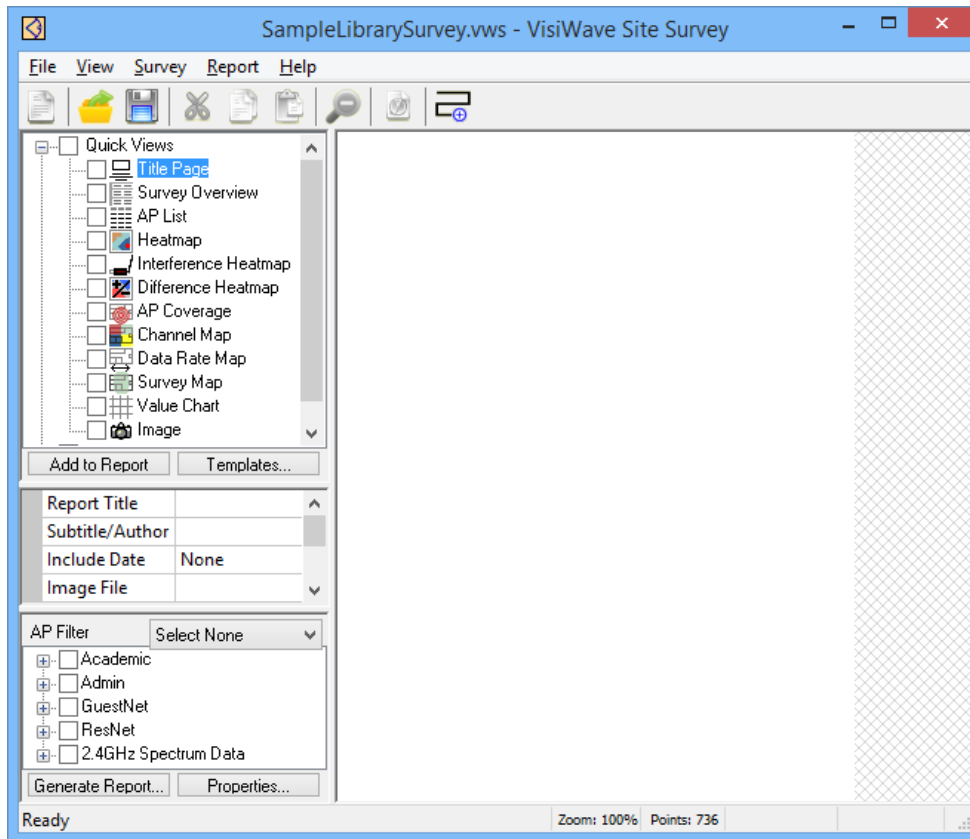
Add a data point by clicking on the survey map with your mouse. Add several more data points. Each data point is represented by a small dot. A red colored dot means the signal strength is strong. A black dot means no wireless signal was found.

More Details About Collecting Data



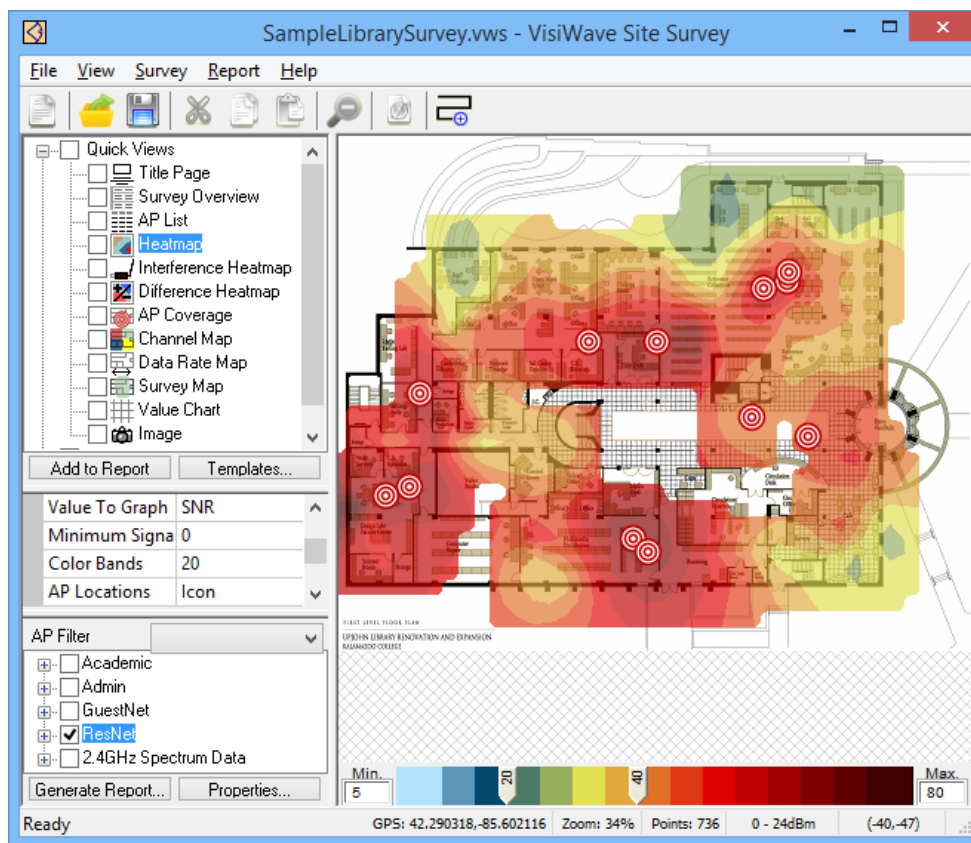
i Viewing Reports

Once you have collected your survey data, you will want to view the results. This is done by switching to the report view. Click on the Report View icon in the toolbar or click on the View menu and select Report View (Alt-R). The report view is shown.



In the upper left corner of the window is a list of all the types of report items you can include in your report. This list is split into two sublists: Quick Views and Report Items. You use the Quick Views items as a starting point for items you add to your report. Only items listed under Report Items become pages in your final report.

Click on the Heatmap item under Quick Views. This displays the survey map in the right pane and the item's properties just below the report items in the left pane. You can change any properties to change the appearance of the heatmap. You will especially want to select the APs you want mapped in the heatmap using the AP Filter list. Once you select one or more APs in the AP Filter, the colored heatmap is drawn in the pane on the right.



To add this as a page in your report, click the *Add to Report* button. A copy of this item is then added to the Report Items list. Keep adding more Quick Views to the Report Items section until you have a complete report. Then click on *Generate Report* to create an HTML or PDF survey report.

Need Help?

Drop us an email or have us contact you:

Email

Short Message

Send

*Your contact information will be held in strict confidence and will only be used to solve your issue.

Quick Links

Products (<http://www.visiwave.com/wifi/product.php>) Training (<http://www.visiwave.com/wifi/training.php>)

Download (<http://www.visiwave.com/wifi/download.php>) VisiWave Blog (<http://www.visiwave.com/blog/>)

Purchase (<http://www.visiwave.com/wifi/purchase.php>) Tutorials (<http://www.visiwave.com/wifi/demo.php>)

FAQ (<http://www.visiwave.com/wifi/faq.php>) About Us (<http://www.visiwave.com/wifi/about.php>)

Latest News

VisiWave Site Survey v5.0.3 Released

Nov 22, 2017

A maintenance release of VisiWave Site Survey was released. v5.0 new features. (<http://www.visiwave.com/wifi/visiwave-v50-features.php>)

Find Out More (<http://www.visiwave.com/blog/index.php?archives/30-VisiWave-Site-Survey-v5.0.3-Released.html>)

VisiWave Site Survey v5.0 Released