

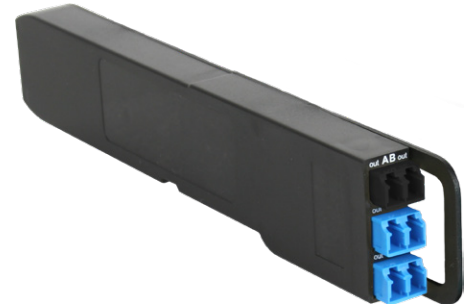
DIODETAP

LC TAP MODULE WITH TOTAL PROTECTION

The DiodeTAP Module provides a TAP point with an innovative security feature. It prevents any potential attacks or disruptions by blocking light coming from the monitor ports.

The DiodeTAP ensures total security and availability for monitored networks, while providing 100% visibility.

The DiodeTAP Module is part of the MOD-TAP series, and uses the Modular Chassis for rack mounting, providing up to 24 modules in 1U.



MAXIMUM INSERTION LOSS (DB)

| SPLIT RATIO* | 50 / 50 | 60 / 40 |
|-----------------|-------------------------|-------------------------|
| Single-Mode 9µm | Network: 3.6 / TAP: 4.4 | Network: 2.7 / TAP: 5.5 |

Note: These values don't include external connector loss.
* Other split ratios available on demand

PRODUCT DIMENSIONS

| | DIMENSIONS (WxDxH) | WEIGHT |
|-----------------|--------------------|---------|
| Modular Chassis | 440 x 202 x 44 mm | 2140 g |
| | 17.3 x 8 x 1.7 in | 4.7 lb |
| DiodeTAP Module | 17 x 217 x 41 mm | 76 g |
| | 0.7 x 8.5 x 1.6 in | 0.17 lb |

PRODUCT SPECIFICATIONS

| CHASSIS | ORDER REFERENCE | | |
|---------------------------------------|-----------------|-------------|-----------------|
| 1U Modular Chassis (up to 24 modules) | AMC-1U | | |
| MODULE | WAVELENGTH | SPLIT RATIO | ORDER REFERENCE |
| LC DiodeTAP | 1310nm | 50/50 | F1D-MOD-13-50 |
| | | 60/40 | F1D-MOD-13-60 |
| SM 9/125 µm | 1550nm | 50/50 | F1D-MOD-15-50 |
| | | 60/40 | F1D-MOD-15-60 |

FEATURES

- Diode function protects network against light insertion from TAP ports (>35 dB insertion loss on TAP port input blocks all signal)
- Non-intrusive in-line monitoring
- Permanent network link guaranteed
- Monitoring of all OSI layers
- No packet loss, no point of failure
- Passive, unpowered
- Various split ratios available

