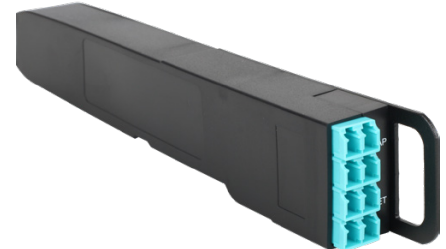


# 40/100G BiDi TAP MODULES

A PERFECT BLEND OF PERFORMANCE AND FLEXIBILITY

The MOD-TAP is a high-density, modular fiber optic solution providing up to 24 LC TAP modules or 16 MTP or 40/100G BiDi TAP modules in 1U.

BiDi Fiber TAP Modules are available in OM4 and OM5 Multi-Mode, 832–918 nm, 50/125 μm fiber optic cabling with a 50/50 or 60/40 split ratio for the monitoring of Cisco bidirectional links.



## TECHNICAL SPECIFICATIONS

CONNECTORS	FIBER TYPE	SPEED	SPLIT RATIO	ORDER REFERENCE
LC	OM4 MM 50 μm 832–918 nm	40G/100G	50/50	F1B-MOD-50
LC	OM4 MM 50 μm 832–918 nm	40G/100G	60/40	F1B-MOD-60
LC	OM5 MM 50 μm 832–918 nm	40G/100G	50/50	F1B2-MOD-50
LC	OM5 MM 50 μm 832–918 nm	40G/100G	60/40	F1B2-MOD-60

## FEATURES

- Non-intrusive in-line monitoring
- Permanent network link guaranteed
- Monitoring of all OSI layers
- No packet loss, no point of failure
- Passive, unpowered
- High density and modular
- 40G and 100G dual-rate capability
- Backward compatibility with 40G BiDi

CHASSIS	ORDER REFERENCE
1U Modular Chassis (up to 16 BiDi modules)	AMC-1U

## PRODUCT DIMENSIONS

	DIMENSIONS (WxDxH)	WEIGHT
MODULAR CHASSIS	440 x 202 x 44 mm	2140 g
	17.3 x 8 x 1.7 in	4.7 lb
40/100G BiDi MODULE	25 x 217 x 41 mm	90 g
	1 x 8.5 x 1.6 in	0.2 lb

## MAXIMUM INSERTION LOSS (dB)

FIBER TYPE	50 / 50	60 / 40
OM4 MM 50 μm	3.8 / 3.8	2.8 / 4.8
OM5 MM 50 μm	3.8 / 3.8	2.8 / 4.8

Note: These values don't include external connector loss.

