

# IOTA 10 CORE<sup>+</sup>

PROBE • CAPTURE • ANALYZE



IOTA 10 CORE+ is a high-speed packet capture and analysis solution for core networks, large branches, and data centers. It empowers network engineers to rapidly identify, analyze, and resolve performance issues, application bottlenecks, and security risks.

With IOTA 10 CORE+, you can continuously capture network traffic and extract detailed real-time and historical insights into critical applications and data flows. By combining full packet capture with advanced metadata extraction, IOTA helps you:

- **Baseline network behavior:** Spot anomalies faster by measuring standard performance metrics during typical operation conditions to establish a reference point.
- **Spot performance issues:** Diagnose latency, throughput, packet loss, and retransmissions at a glance.
- **Analyze application behavior:** Track over 3,000 applications and protocols.
- **Maintain network integrity:** Quickly pinpoint security flaws and irregular protocol usage.

IOTA 10 CORE+ supports two 10G capture ports and can be deployed alone or with TAPs and Network Packet Brokers for maximum flexibility. Internally, a high-performance solid-state drive ensures seamless packet capture and network activity storage, enabling real-time and long-term forensic analysis on high-speed networks.

- **Ring buffer:** Avoid data loss by continuously recording traffic in a loop.
- **Capture efficiency:** Apply filters to reduce the amount of data captured and choose to capture metadata only. This can reduce data volume by up to 90% compared to raw PCAP files while retaining critical packet-level details.
- **Scalable storage:** Choose the SSD capacity that matches your retention and analysis needs.

## Features

- New IOTA v6 software with real-time statistics dashboards
- 2 x 10G in-line/out-of-band capture inputs
- 3, 15, or 30 TB high-performance solid-state drive storage
- Removable storage for high security environments
- Advanced hardware timestamping (GPS, PPS, NTP, PTPv2)
- Remote access and management
- Ring buffer
- Rackmount option available



IOTA 10 CORE+ Front



IOTA 10 CORE+ Rear

## Technical specifications

CONNECTORS	LEDS
2 x 10G SFP+ capture 1 x SMA GPS 1 x SMA PPS 1 x 10G SFP+ management 1 x 2.5G RJ45 management + PTPv2 1 x RS232 serial RJ45 management 1 x USB 3.0 port	4 x SFP+ link/activity LED Status LED Power LED Capture LED Sync LED
STORAGE	POWER
3, 15, or 30 TB high-performance solid-state storage	2 x 24 VDC barrel jack or screw terminal (redundant) 1 x earth terminal
COMPLIANCE	INCLUDED ACCESSORIES
RoHS CE FCC UKCA	1 x power adapter (100–240 VAC to 24 VDC, 5 A, 120 W) 1 x C13 AC power cord 1 x GPS/GLONASS antenna 1 x RJ45 Ethernet cable 1 x USB to RJ45 cable 1 x carry case

## Advanced timestamping

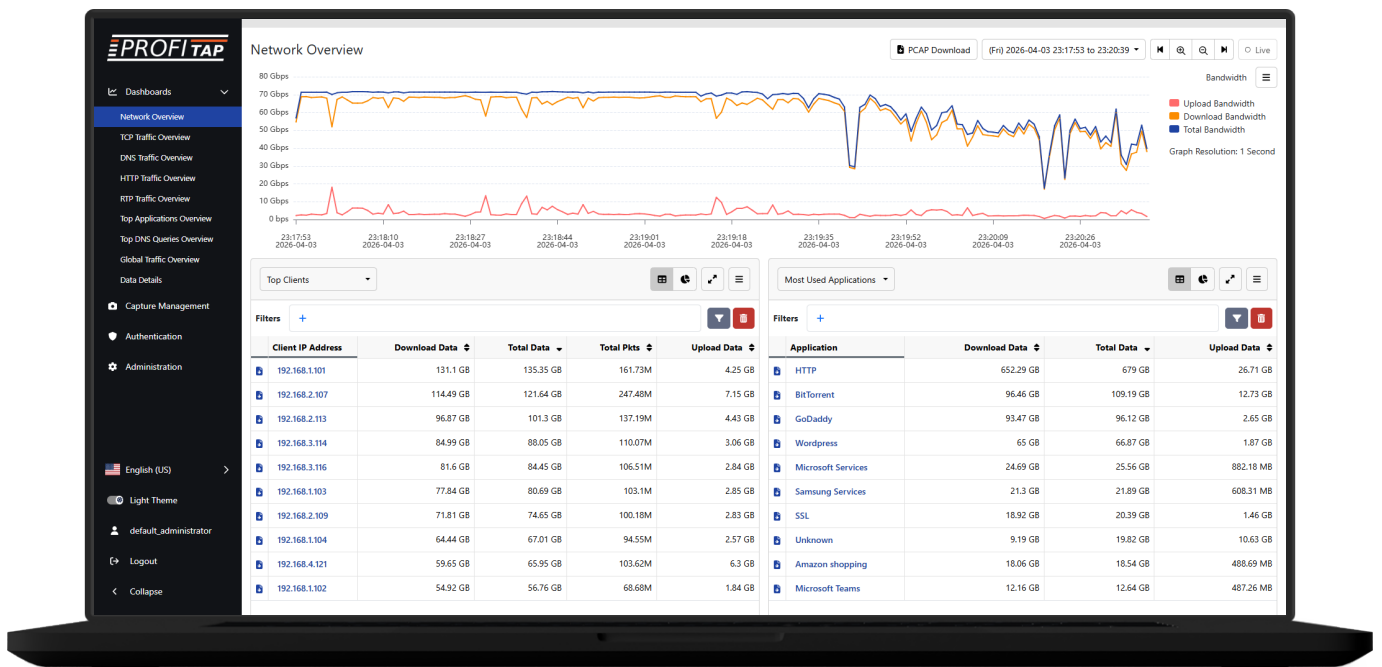
The IOTA 10 CORE+ is equipped with GPS and PPS timing ports and a management port supporting PTPv2, for synchronized timestamping and synchronization capabilities.

The advanced timestamping capabilities provide highly accurate, UTC-aligned absolute timestamps, which are valuable for applications that rely on precise latency measurements, accurate traffic analysis, and synchronized network visibility across multiple devices.

The PPS port allows IOTA to be directly synchronized to an external PPS timing source, ensuring coherent and consistent timestamping across distributed systems.

The IOTA 10 CORE+ employs hardware-based timestamping with a resolution of <10 ns, delivering reliable and precise ingress frame measurements.

By combining GPS-based timestamp initialization and PPS input, IOTA 10 CORE+ ensures superior synchronization, precision timing, and accurate latency measurements critical for high-performance network monitoring and analysis.



## License comparison

CAPABILITY	BASE IOTA	APDA LICENSE *
Network baseline monitoring	✓	✓
Top applications visibility	✓	✓
Bandwidth monitoring	✓	✓
Top clients / servers	✓	✓
TCP performance analysis	—	✓
DNS traffic analysis	—	✓
HTTP endpoint performance	—	✓
RTP troubleshooting	—	✓
TLS connection analysis	—	✓

\* Advanced protocol decoding and analysis

## Advanced protocol decoding and analysis

The advanced protocol decoding and analysis license enables additional capabilities for in-depth analysis using detailed functionality and performance metrics for TCP, DNS, HTTP, RTP, and TLS.

### TCP:

TCP latency, retransmissions, iRTT, out-of-order packets over time.

### DNS:

Client information, DNS server details, queries, performance metrics, error reporting.

### HTTP:

Error codes and response times for HTTP servers and individual endpoints, user agent monitoring.

## Order references

<b>CBC2-10-3T</b>	IOTA 10 CORE+ incl. capture to disk function with L2–L7 statistics 3 TB internal storage 1 year warranty and maintenance (professional support, software updates, ZeroTier services)
<b>CBC2-10-15T</b>	IOTA 10 CORE+ incl. capture to disk function with L2–L7 statistics 15 TB internal storage 1 year warranty and maintenance (professional support, software updates, ZeroTier services)
<b>CBC2-10-30T</b>	IOTA 10 CORE+ incl. capture to disk function with L2–L7 statistics 30 TB internal storage 1 year warranty and maintenance (professional support, software updates, ZeroTier services)
<b>CBC2-10-APDA</b>	IOTA 10 CORE+ advanced protocol decoding and analysis license (TCP, DNS, HTTP, RTP, TLS)
<b>CBC2-10-MAIN</b>	IOTA 10 CORE+ 1 year of extended maintenance (professional support, software updates, and ZeroTier services)
<b>CBC2-10-WAR</b>	IOTA 10 CORE+ 1 year of extended hardware warranty (does not cover SSD)

