

MOD-TAP

USER MANUAL

If you have any questions, visit our Knowledge Base:

<https://kb.profitap.com/>

You can also contact us through our website:

<https://www.profitap.com/contact-us/>

Or directly by email:

support@profitap.com

For the latest documentation and software, visit our Resource Center:

<https://resources.profitap.com/>

TABLE OF CONTENTS

| | |
|---|-----------|
| 1. Installation | 4 |
| 1.1. Chassis | 4 |
| 1.2. Modules | 4 |
| 2. Connection | 4 |
| 2.1. F1L-MOD LC TAP Modules / F1D-MOD DiodeTAP Module | 5 |
| 2.2. F1M-MOD MTP TAP Modules | 6 |
| 2.3. F1B-MOD BiDi TAP Module | 7 |
| 3. Technical Specifications | 7 |
| 3.1. F1L-MOD | 7 |
| 3.2. F1D-MOD | 8 |
| 3.3. F1B-MOD | 8 |
| 3.4. F1M-MOD | 9 |
| 3.5. AMC-1U Modular Chassis | 9 |
| Legal | 10 |
| Disclaimer | 10 |
| Copyright | 10 |
| Trademarks | 10 |

1. Installation

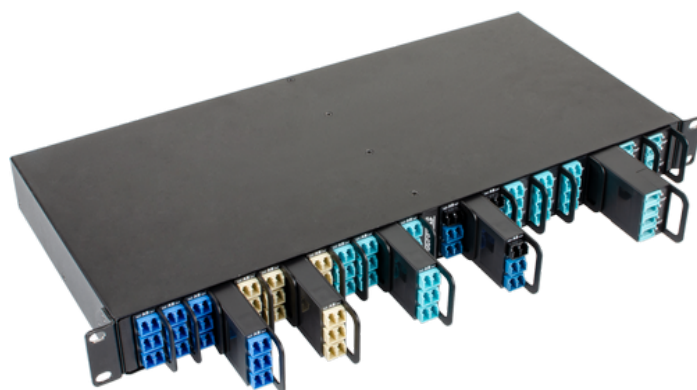
1.1. Chassis



The modular chassis can be mounted in a standard 19" rack. Slide the chassis into the desired rack location, with the internal module rails downward. Secure the chassis to the rack using appropriate rack screws.

1.2. Modules

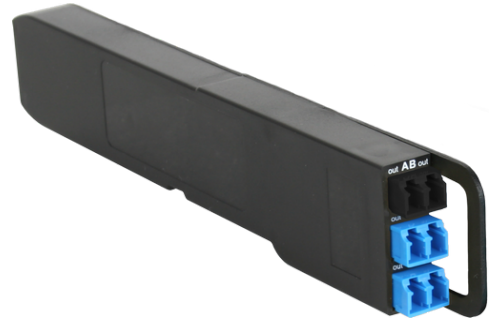
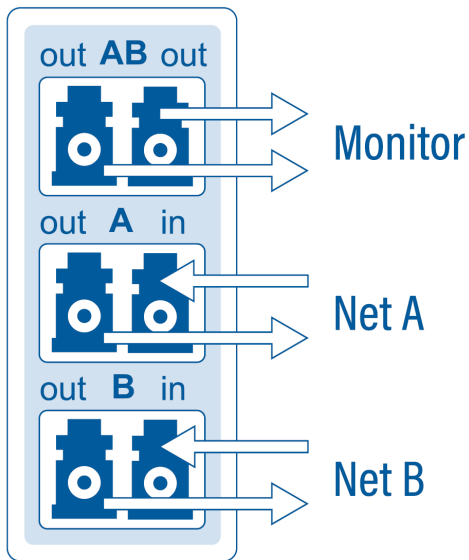
Insert the modules in the modular chassis until you feel the click indicating that they are secured in the internal chassis rails. If the modules do not slide smoothly into the chassis, verify that the internal rails are located at the bottom of the chassis, and that the modules are aligned with the internal rails, with the modules' front text upright.



2. Connection

Note: Fiber optic end-face cleanliness is critical for proper signal transmission, as dust and other microscopic particles can disturb or block the optical signal. Keep dust caps on unused connectors to minimize contamination risk. Always clean the connector end-faces using proper fiber optic cleaning equipment before mating them. In the event of a weak or absent signal, the first troubleshooting step should be to clean the connector end-faces.

2.1. F1L-MOD LC TAP Modules / F1D-MOD DiodeTAP Module

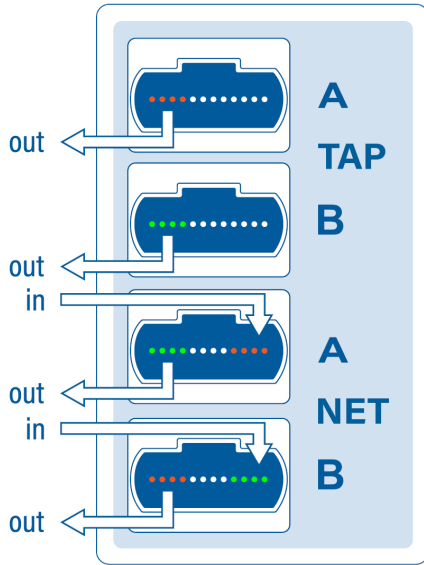


Connect the TAP as shown above.

The **out** (Tx) ports of Net A and Net B on the TAP should be connected to the **in** (Rx) ports of the in-line network devices, and the **in** (Rx) ports to the **out** (Tx) ports. **Connecting the network ports incorrectly prevents the analyzer (TAP) from receiving any signal.**

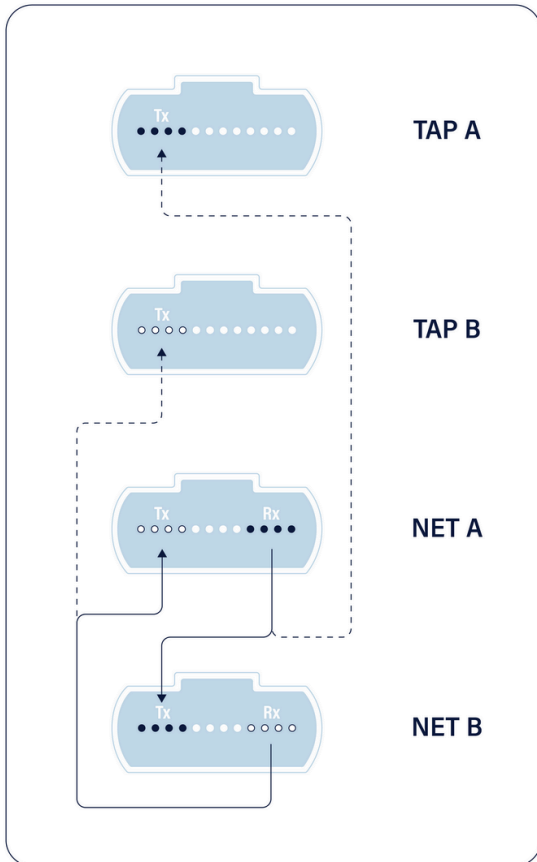
The **out** (Tx) ports of TAP AB should be connected to the analyzer using **split duplex cables**, and to **RX-only transceivers**.

2.2. F1M-MOD MTP TAP Modules

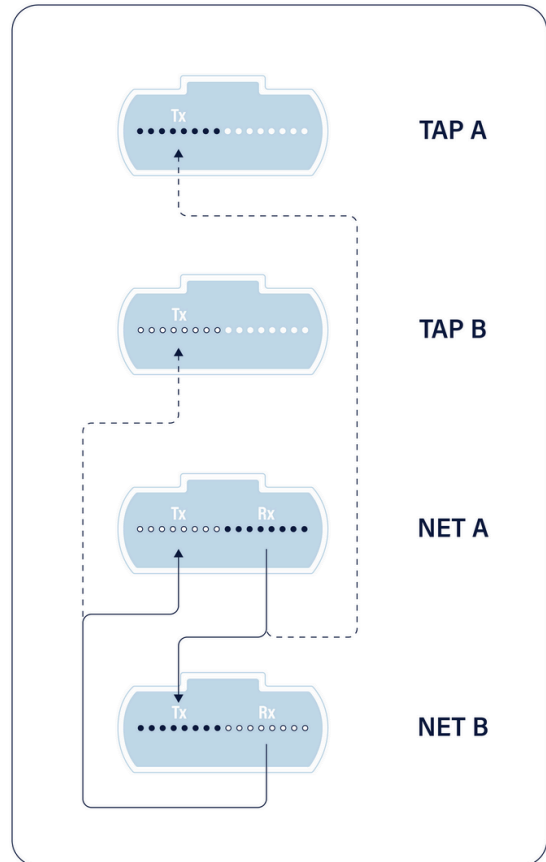


MTP TAP module port layout (SR4/PLR4/PSM4)

Connect the TAP as shown above, with NET A and NET B connected to network device A and network B of the link to be monitored. Connect TAP A and TAP B to the analyzer using **cross cables (type B)**.

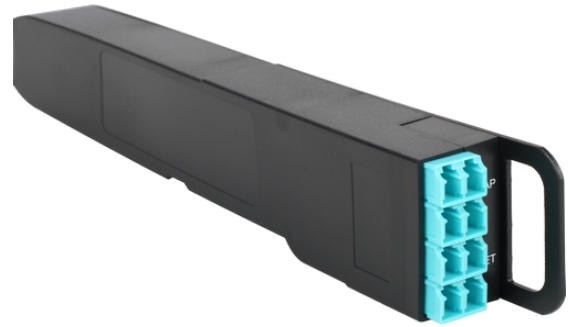
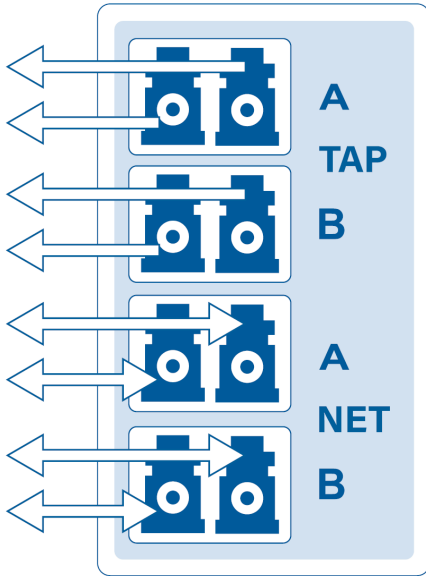


SR4 MTP Modules Internal Cabling



SR8 MTP Modules Internal Cabling

2.3. F1B-MOD BiDi TAP Module



Connect the TAP as shown above.

Note: Use **RX-only transceivers** on the monitoring appliance.

3. Technical Specifications

3.1. F1L-MOD

| Model | Fiber type | Wavelengths | WDM | Split ratio | Maximum insertion loss (dB) NET / TAP |
|--------------|--------------------|--------------|-----|-------------|--|
| F1L-MOD-U-50 | Multi-Mode 62.5 µm | 850/1300 nm | No | 50/50 | 4.0 / 4.0 |
| F1L-MOD-U-60 | Multi-Mode 62.5 µm | 850/1300 nm | No | 60/40 | 3.0 / 5.0 |
| F1L-MOD-U-70 | Multi-Mode 62.5 µm | 850/1300 nm | No | 70/30 | 2.4 / 6.3 |
| F1L-MOD-U-80 | Multi-Mode 62.5 µm | 850/1300 nm | No | 80/20 | 2.0 / 8.3 |
| F1L-MOD-Z-50 | Multi-Mode 50 µm | 850/1300 nm | Yes | 50/50 | 3.8 / 3.8 |
| F1L-MOD-Z-60 | Multi-Mode 50 µm | 850/1300 nm | Yes | 60/40 | 2.8 / 4.8 |
| F1L-MOD-Z-70 | Multi-Mode 50 µm | 850/1300 nm | Yes | 70/30 | 2.2 / 6.1 |
| F1L-MOD-Z-80 | Multi-Mode 50 µm | 850/1300 nm | Yes | 80/20 | 1.8 / 8.1 |
| F1L-MOD-S-50 | Single-Mode 9 µm | 1310/1550 nm | Yes | 50/50 | 3.4 / 3.4 |
| F1L-MOD-S-60 | Single-Mode 9 µm | 1310/1550 nm | Yes | 60/40 | 2.5 / 4.5 |
| F1L-MOD-S-70 | Single-Mode 9 µm | 1310/1550 nm | Yes | 70/30 | 1.7 / 5.8 |
| F1L-MOD-S-80 | Single-Mode 9 µm | 1310/1550 nm | Yes | 80/20 | 1.2 / 7.9 |

Dimensions (WxDxH):

17 x 217 x 41 mm
0.7 x 8.5 x 1.6 in

Weight:

76 g
0.17 lb

3.2. F1D-MOD

| Model | Fiber type | Wavelength | Split ratio | Maximum insertion loss (dB) NET / TAP |
|---------------|------------------|------------|-------------|--|
| F1D-MOD-13-50 | Single-Mode 9 µm | 1310 nm | 50/50 | 3.6 / 4.4 |
| F1D-MOD-13-60 | Single-Mode 9 µm | 1310 nm | 60/40 | 2.7 / 5.5 |
| F1D-MOD-15-50 | Single-Mode 9 µm | 1550 nm | 50/50 | 3.6 / 4.4 |
| F1D-MOD-15-60 | Single-Mode 9 µm | 1550 nm | 60/40 | 2.7 / 5.5 |
| F1D-MOD-85-50 | Multi-Mode 50 µm | 850 nm | 50/50 | 3.8 / 5.0 |
| F1D-MOD-85-60 | Multi-Mode 50 µm | 850 nm | 60/40 | 2.8 / 6.0 |

Dimensions (WxDxH):**SM 9 µm modules:**

17 x 217 x 41 mm
0.7 x 8.5 x 1.6 in

Weight:**SM 9 µm modules:**

76 g
0.17 lb

MM 50 µm modules:

68 x 217 x 41 mm
2.7 x 8.5 x 1.6 in

MM 50 µm modules:

550 g
1.21 lb

3.3. F1B-MOD

| Model | Fiber type | Wavelengths | Split ratio | Maximum insertion loss (dB) NET / TAP |
|-------------|----------------------|-------------|-------------|--|
| F1B-MOD | OM4 Multi-Mode 50 µm | 832-918 nm | 50/50 | 3.8 / 3.8 |
| F1B2-MOD | OM5 Multi-Mode 50 µm | 832-918 nm | 50/50 | 3.8 / 3.8 |
| F1B2-MOD-60 | OM5 Multi-Mode 50 µm | 832-918 nm | 60/40 | 2.8 / 4.8 |

Dimensions (WxDxH):

25 x 217 x 41 mm
1 x 8.5 x 1.6 in

Weight:

90 g
0.2 lb

3.4. F1M-MOD

| Model | Fiber type | Split ratio | Maximum insertion loss (dB) NET / TAP |
|----------------|---|-------------|--|
| F1M-MOD-SR4-50 | MM 50/125µm 40GBASE-SR4 MM 50/125µm 100GBASE-SR4 | 50/50 | 4.2 / 4.2 |
| F1M-MOD-SR4-60 | MM 50/125µm 40GBASE-SR4 MM 50/125µm 100GBASE-SR4 | 60/40 | 3.0 / 5.0 |
| F1M-MOD-SR4-70 | MM 50/125µm 40GBASE-SR4 MM 50/125µm 100GBASE-SR4 | 70/30 | 2.4 / 6.3 |
| F1M-MOD-SR8-50 | MM 50/125µm 400GBASE-SR8 | 50/50 | 4.2 / 4.2 |
| F1M-MOD-SM-50 | SM 9/125µm 40GBASE-PLR4 SM 9/125µm 100GBASE-PSM4 | 50/50 | 3.8 / 3.8 |
| F1M-MOD-SM-60 | SM 9/125µm 40GBASE-PLR4 SM 9/125µm 100GBASE-PSM4 | 60/40 | 2.7 / 4.7 |
| F1M-MOD-SM-70 | SM 9/125µm 40GBASE-PLR4 SM 9/125µm 100GBASE-PSM4 | 70/30 | 2.4 / 6.1 |

Dimensions (WxDxH):

25 x 217 x 41 mm

1 x 8.5 x 1.6 in

Weight:

100 g

0.22 lb

3.5. AMC-1U Modular Chassis

Dimensions (WxDxH):

440 x 202 x 44 mm

17.3 x 8 x 1.7 in

Weight:

2140 g

4.7 lb

Legal

Disclaimer

The manufacturer makes no representations or warranties with respect to the contents hereof and specifically disclaims any implied warranty of merchantability or fitness for any particular purpose. The manufacturer reserves the right to revise this publication and to make changes in the content thereof without obligation of the manufacturer to notify any person of such revision or changes.

Copyright

This publication, including all photographs and illustrations, is protected under international copyright laws, with all rights reserved. Neither this manual, nor any of the material contained herein, may be reproduced without written consent of the author.

Trademarks

The trademarks mentioned in this manual are the sole property of their owners.

Profitap HQ B.V.
High Tech Campus 84
5656AG Eindhoven
The Netherlands
sales@profitap.com
www.profitap.com

© 2026 Profitap — v2.2