

# XX-3200G

PROVIDES THE DATA THAT COUNTS FOR NETWORK MONITORING

## AGGREGATION, REPLICATION, ADVANCED FILTERING, LOAD BALANCING

The Profitap XX-3200G is a high-density Network Packet Broker, bringing you the power and flexibility of network traffic management with a total throughput of 3200 Gbps in a single 19" rack unit.

The XX-3200G features 32 QSFP28 ports (40/100 Gbps) providing aggregation, replication, filtering and load balancing in very high bandwidth port monitoring and analysis scenarios.



## KEY BENEFITS

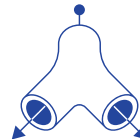
- Optimize traffic and deliver actionable data to monitoring and security tools.
- Leverage existing infrastructure for a cost-effective increase in capabilities.
- High performance and throughput in a compact, high density footprint.
- Advanced integration with physical and virtual traffic access, analysis, and security systems.

## KEY FEATURES



### AGGREGATION

Aggregate two or more incoming streams of data into a single stream. Combine with the replication and filtering features to send different parts of the aggregated traffic to different output ports.



### REPLICATION

Replicate a stream of data to multiple output ports. Combine with the aggregation and filtering features to send different parts of the aggregated traffic to different output ports.



### FILTERING

Ensure optimum efficiency of monitoring, security tools, and bandwidth utilization by filtering traffic such that only appropriate data is sent to these network tools.



### LOAD BALANCING

Distribute the traffic load between different output ports to optimize resource utilization.

## USE CASES

- Balance traffic over multiple monitoring and security tools: allows incoming traffic to be distributed evenly and dynamically across multiple output ports.
- Aggregate multiple traffic streams into higher speed links.
- Replicate traffic to multiple monitoring and security tools: outputs copies of incoming traffic to multiple output ports.
- Filter specific parts of the traffic based on a wide array of allow and drop rules to ensure the appropriate traffic is sent to the appropriate tools.

# HIGHLIGHTS

- Local and remote management (CLI, SSH, GUI, SNMP, Syslog)
- RESTful API support
- Layer 2-4 filtering
- Flexible role-based management access
- TACACS+/RADIUS/LDAP authentication
- Centralized authentication via Profitap Supervisor (local users, TACACS+, RADIUS, LDAP)
- Ingress VLAN tagging
- Redundant, hot-swappable, Platinum efficiency PSUs and fan modules
- High-density, 3200 Gbps throughput in a 1U footprint
- Supports 40G, 100G
- Up to 124 x 10/25G logical ports via fanout cables



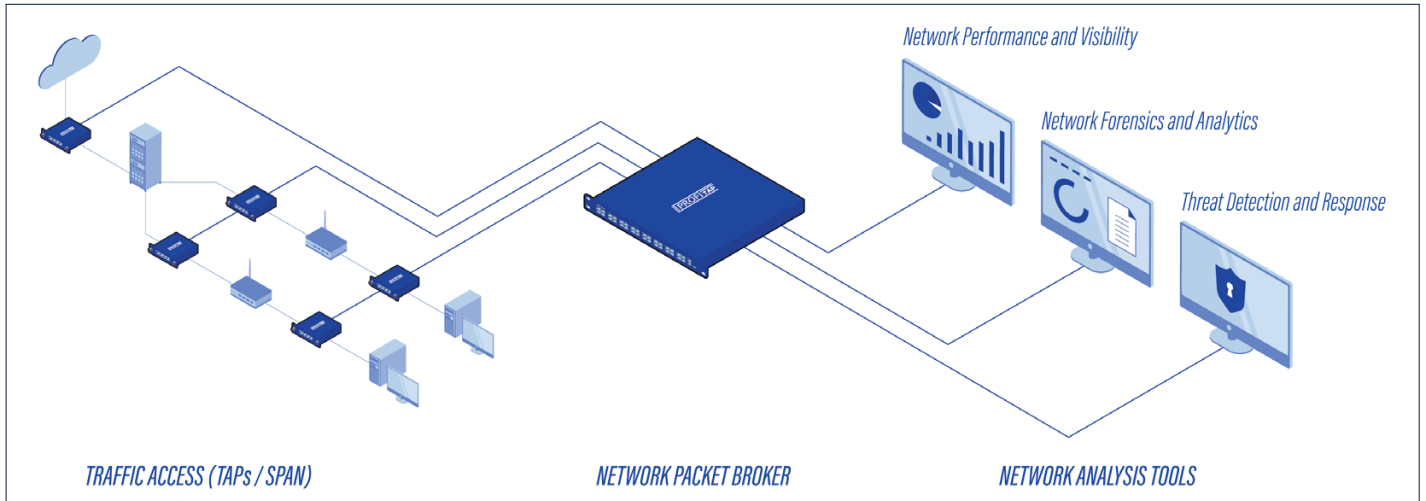
# TECHNICAL SPECIFICATIONS

<p><b>CONNECTORS</b></p> <p>32 x QSFP28 ports          1 x SFP+ management          2 x RJ45 out-of-band management          1 x USB</p>	<p><b>LEDs</b></p> <p>1 x System status          1 x Fan status          1 x PSU0 status          1 x PSU1 status</p>	<p><b>ACCESSORIES</b></p> <p>2 x 750 W, 100–240 VAC 50–60 Hz,          190–310 V HVDC, 80+ Platinum          or          2 x 750 W, -36V--72 VDC, 80+ Platinum</p>
<p><b>WEIGHT</b></p> <p>7.5 kg — 16.5 lb</p>	<p><b>COMPLIANCE</b></p> <p>RoHS — CE — FCC</p>	<p><b>DIMENSIONS (WxDxH)</b></p> <p>440 x 480 x 44 mm — 17.32 x 18.9 x 1.73 in</p>

# ORDER REFERENCES

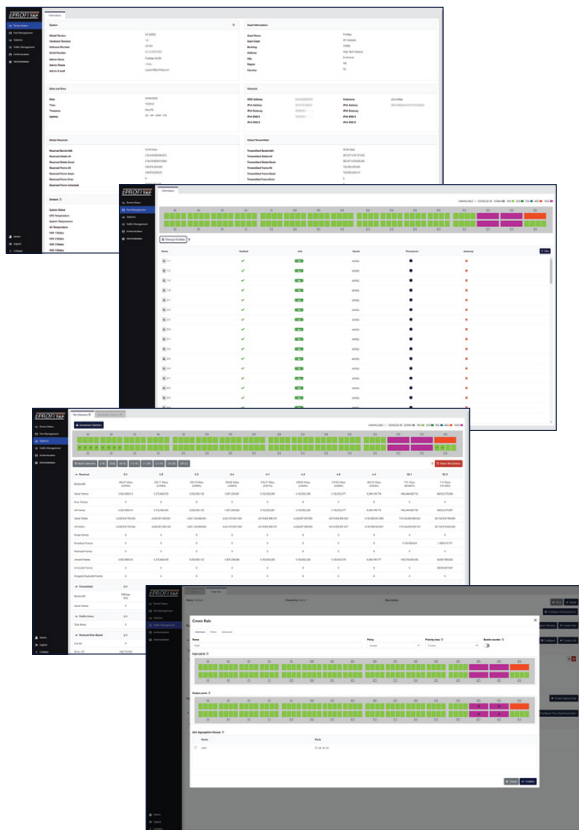
<b>PORT LICENSE</b>	<b>AC (2 x 750 W, 100-240 VAC) PSU</b>	<b>DC (2 x 750 W, -36V--72 VDC) PSU</b>
16 x 40/100G QSFP28	XX-3200G-16-AC	XX-3200G-16-DC
32 x 40/100G QSFP28	XX-3200G-32-AC	XX-3200G-32-DC

# INTEGRATION



## WEB GUI

XX-Series integrates a web-based management interface that allows users to configure and monitor the behavior of the device. Running locally on the device and designed with user experience and ease of use in mind, this interface enables advanced configuration settings to be set and applied quickly and easily. This web-based interface allows easy access from any OS or platform.



### DEVICE STATUS

Device status offers a quick overview of operational statistics related to the packet broker hardware.

### PORT MANAGEMENT

Port management offers instant overview of port status and speed. Users control the configuration of all QSFP modules, where each module offers additional information in the specific status section.

### PORT STATISTICS

Port statistics displays and monitors the statistics counter for each of the device interfaces.

### TRAFFIC MANAGEMENT

Define how the traffic will flow through the device interfaces. Using a direct control interface the user will be able to define aggregation, duplication and filtering rules.